



**Inspiration Hub**  
Decentralised Human Organisation

## 'Plastics Contained'

### Project Summary

Plastic pollution has become ubiquitous across the globe and according to recent estimates, the world is on track to [generate a further 220 million tons](#) of plastic waste this year.

#### Mission

Plastics Contained is an exciting community upliftment project, focused on removing plastics out of the natural environment and transforming them into useful and beneficial products for the community.

The goal is to significantly reduce, if not eliminate, the amount of plastic pollution in our community. The project aims to do this by creating awareness of the plastic pollution problem and to highlight some of the [innovative and viable solutions](#) and alternatives available to us today.

#### Products & Services

The project will operate in the [Precious Plastic universe](#), collaborating with [local network members](#) to build a portfolio of products and services using the Precious Plastics open-source platform. Initially the Plastics Contained project will focus on collection and shredding in warehouse space that has been kindly offered to us in Newhaven.

#### The Opportunity

Precious Plastics and [Plastic Whale](#) are two exemplary projects that we can emulate to reduce plastic pollution in the community. As demonstrated by the above models, the benefits to the community are profound and this project aims to bring all that knowledge, experience and open-source equipment into action, for the enrichment of our community as a whole.

[Collection points](#) will be identified to gather plastic from neighbours, organisations and businesses to be processed in the shredder workspace. In addition, [Community Points](#) will be established to connect and grow the local recycling network, strengthening the existing community while involving more and more people as awareness of the project grows. A [machine shop](#) will be equipped to produce and build parts, machines and moulds for the project and others in the local recycling network.

## Financial Highlights

Initial cost of setting up the [shredding workspace](#) ranges from approximately £4,500 - £13,500, dependent on size of operational set-up and throughput capacity.



### Starterkits



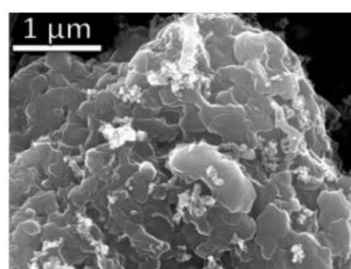
Setup		Run	
Investment	5 to 16K €	Difficulty	* *
People	2	Technical	* *
Build time	4-6 weeks	Revenue	* * *
Space	30 msq	Plastic processed	* * * * *
Electricity	380V / 16AMP / 3KW	Time commitment	* * * * *

Shredding produces plastic flakes that have a market value currently averaging anywhere between [25p and 50p](#) per Kg, depending on plastic type.

Utilizing pledged member hours, the project will sort, shred and sell the collected plastic to cover operating costs and new equipment builds, in addition to expanding operations and community reach.

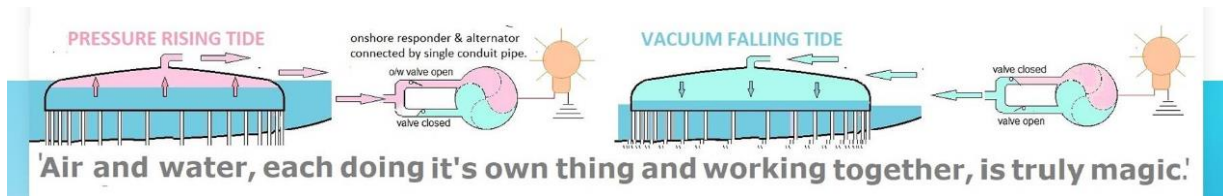
*“... [latest Analysis](#) on the global "Recycled PET Flakes Market" for 2024 reveals a consistent and robust upward trajectory in recent years, a trend expected to persist favorably until 2032.”*

Additionally, the project could also potentially provide feedstock for a [flash Joule heating set up](#), to convert mixed waste plastic into [high purity graphene and hydrogen](#).



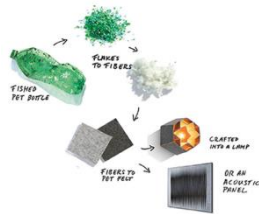
Kevin Wyss/Tour lab

Scanning electron microscope (SEM) image of layered stacks of nano-scale flash graphene sheets formed from waste plastic.



We are also in the process of exploring a collaboration to install a [LPD \(Lunar Pulse Drum\) energy system](#) on the same site, creating community awareness and appreciation of the significant benefits that the LPD system has to offer, from the clean and reliable energy it's capable of producing for the community, to the attraction of marine life that naturally grows and gathers around the installation over time.

A warehouse space for initial operations is available, albeit that the site is located in Newhaven, which is approximately 20 miles from Shoreham, and where the plastics will be transformed from waste into valuable raw materials and/or products.



The potential income streams are vast and varied, so future financial figures will be determined by the final product and application choices of the project team, as and when those decisions have been made.